

Yarra Valley Hockey Club

Strategic Plan 2020

Vision:

To be a top tier Victorian hockey club with

- Premier League seniors
- A grade all junior grades including girls

Mission:

A sporting Club that promotes hockey within the Cities of Banyule and Darebin as a 'sport for all'

- Teams at all levels to provide hockey products to players of all ages and abilities all year round



Yarra Valley Hockey Club

Strategic Plan 2020

Values:

- To create a culture of sporting excellence
- To strive to provide positive experiences for all players, officials, their families and supporters
- To promote codes of conduct for players, officials and supporters, identifying YVHC as an organisation which endorses the principles of fair play, equal opportunity and racial/gender equality

Culture:

A welcoming and inclusive family environment starting with the fostering of juniors through to member development and progression through to senior level and lifelong relationships with the club and fellow members.



Yarra Valley Hockey Club

Strategic Plan 2020

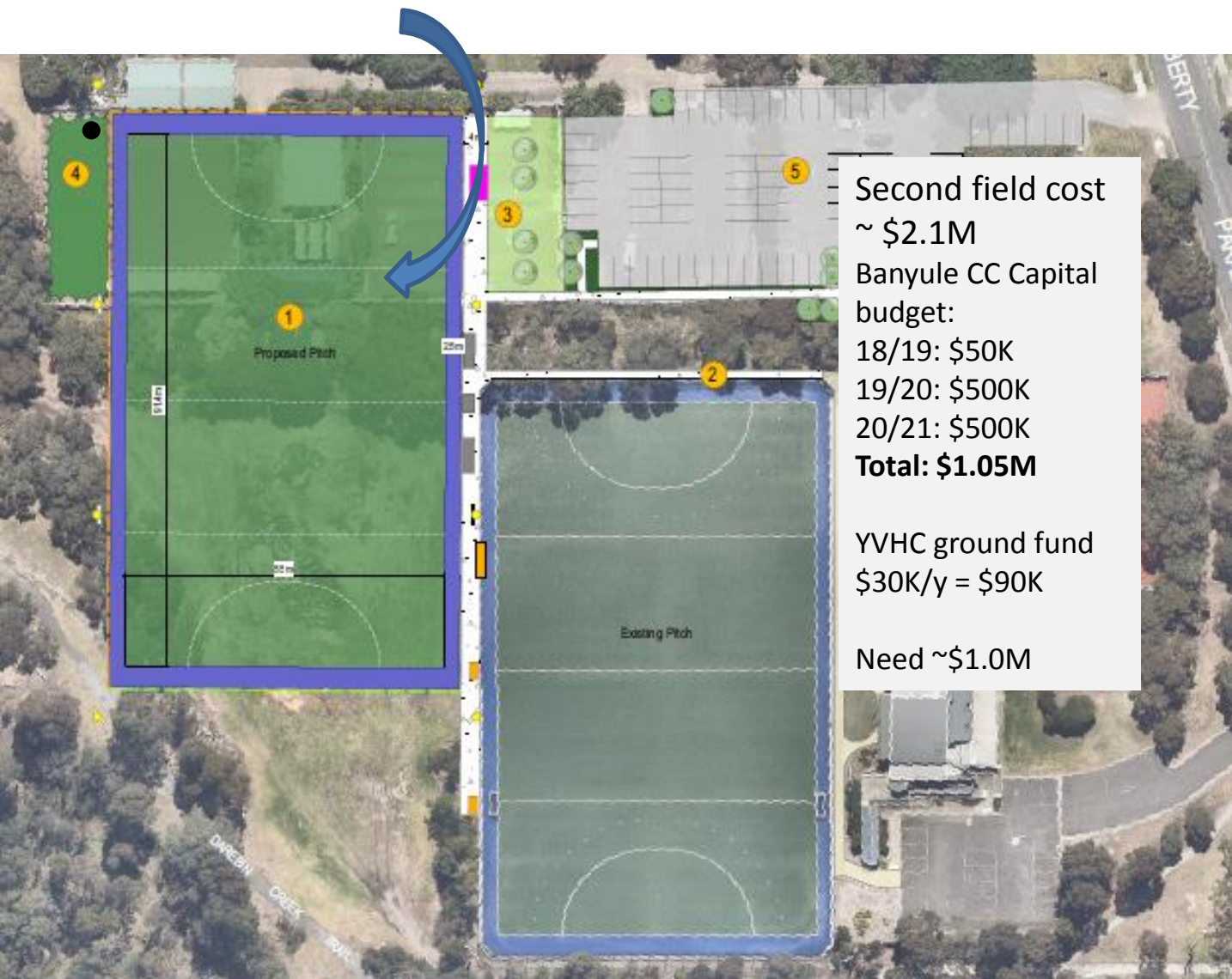
Strategic Objectives:

- **Retain and grow – players, teams and grades – 10% per year**
 - H2H, Hockey in Schools, girls and mixed streams, summer indoor teams
- **Continue to develop and upgrade Coaching structures throughout the club**
 - Aust Sports Foundation program to support specialist coaching – tax exempt donation facility
 - Establish coaching support structures – junior & senior
 - Recruit high calibre coaches to senior and shield teams
- **Progress the facilities plan:**
Site redevelopment plan incorporating
 - Current field resurfacing (\$0.85M) - done
 - Contemporary electronic scoreboard - done
 - Second field (\$2.0M)
 - Female friendly changerooms
- **Continue to evolve administration process in line with PLEC separating operational and strategic priorities:**
 - Coterie group for past players and parents.
 - Build sponsorship based on multi tiered basis.
 - Active grant attraction process.



Facility priorities

- sinking fund for future pitch resurfacing
- second pitch



Yarra Valley Hockey Club

- Formed in 1977 by merger of Fairfield and Ivanhoe HC
- Originally founded in 1906
- Founding club within Hockey Victoria
- Historic tradition:
 - Very successful with top league in HV competitions: foundation premiership in 1906, back to back premierships 1982, 1983. Current PL cup is called the Fairfield cup in honour of premiership history.
 - 98% of the 1911 Fairfield teams were at the Great War front in 1916, many never returned
 - More than 100 Ivanhoe players enlisted in WW2, a dozen made the ultimate sacrifice
 - Community engagement for > 100 years across a huge catchment area north of Yarra from Clifton Hill, Fitzroy, Fairfield, Alphington, Ivanhoe, Reservoir, Heidelberg, Preston and further afield.

In 2019, a club based in Bellfield, Ivanhoe
More than 450 members, 32 teams playing in HV winter competitions, plus numerous playing in summer / indoor competitions
Largest club in Hockey Victoria's North West Metro Zone
Effectively a sub regional based club
Junior members 200, plus 70 introductory H2H participants (<U8) in 2018
70% of members drawn from local Districts of Ivanhoe & Northcote.
Members playing aged from 5 to 80 years old
Over 150 female members - female teams from U10 all the way through to Masters (>35's).

